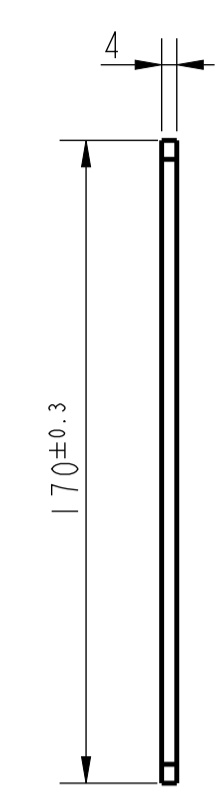
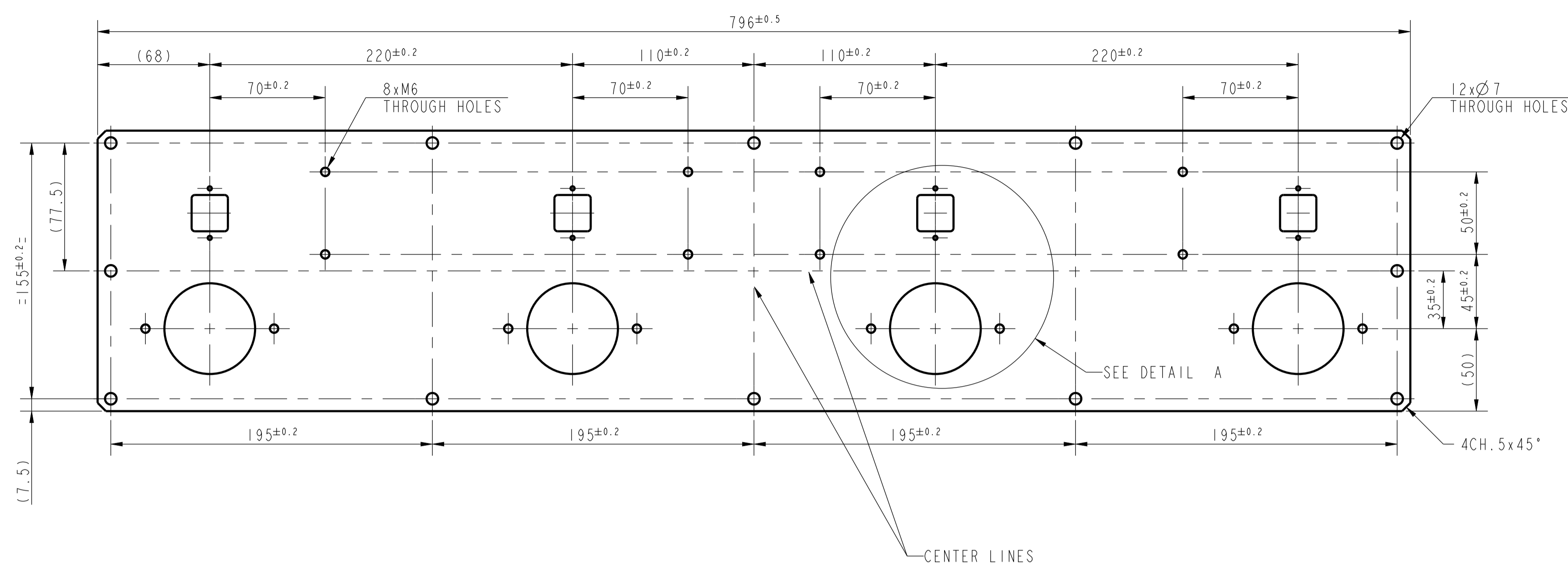
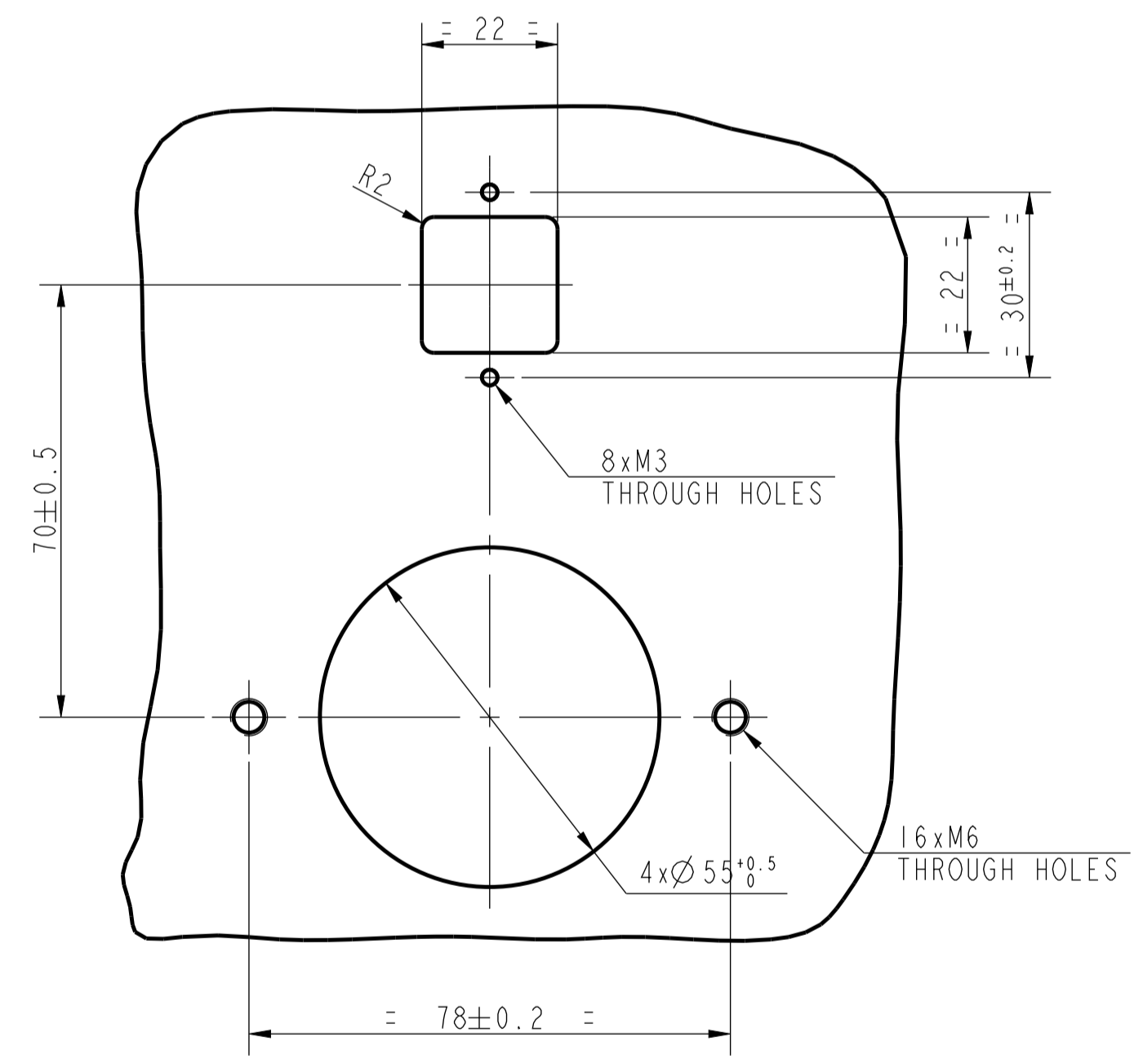


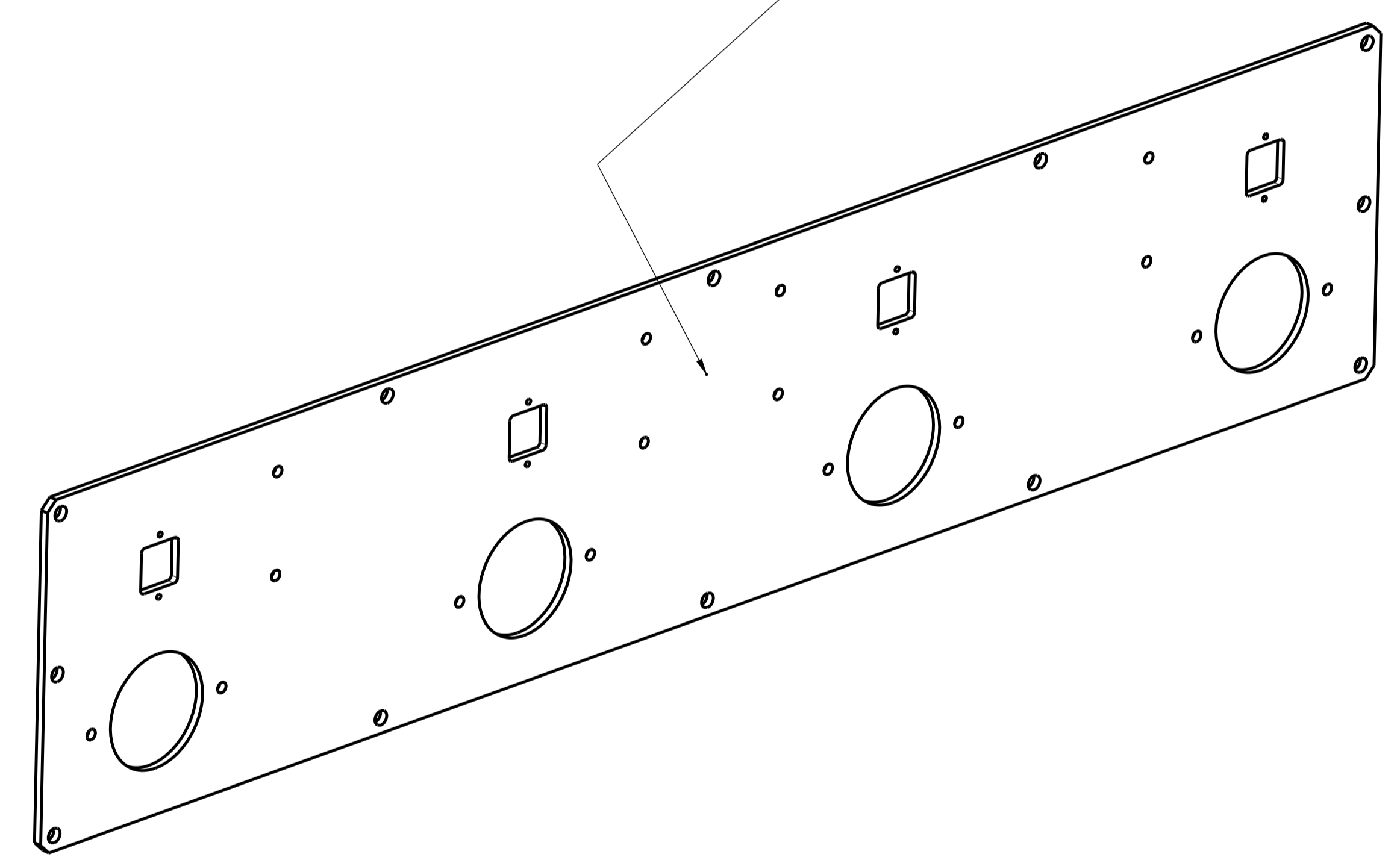
CP MANUFACTURING INFORMATION			9F19103
R. M.	QTY	DESCRIPTION	
----	0.0	-----	



MARKING
SEE MARK 1 DETAIL
9F19103 - 0
PO CC XXXXXX



DETAIL A
SCALE 1/1



NOTE:
PAINT BLACK RAL 9005 (DO NOT PAINT THREADED HOLES)

MATERIAL NAME	MATERIAL 1	MATERIAL 2	MATERIAL 3	MATERIAL 4
S235 JR	1.0037	S137-2	----	----
NOMINAL DIMENSIONAL TOLERANCES UNLESS OTHERWISE SPECIFIED				
LINEAR				
UP TO	0	3	6	30
TOLERANCE	± 0.10	± 0.10	± 0.20	± 0.30
RADIUS OR CHAMFER				
UP TO	0	3	6	30
TOLERANCE	± 0.20	± 0.50	± 1.00	± 2.00
ANGULAR				
UP TO	0	30	120	10
TOLERANCE	± 1°	± 30'	± 20'	± 10'
FINISH				
6.3				
PROJECT				
DP230017				
MODEL				
PDM300				
DRAWING #				
9F19103				
REV				
0				

TRACEABILITY PUR 34			
GENERAL	- Markings must be easily readable. - Mark Vesuvius logo + Supplier Initials ex: (DD)		
MARK 1 DETAIL	- Part number + Revision (BB) - PO + initials of TTF (CC) + Machining PO number (XXXXXX)		
DRAWN	DRAWN DATE	APPROVED	APPROVED DATE
BAA	04/02/24	YAJ	04/02/24
PDM300 FRONT PLATE FOR THERMOCOUPLE 4L			

THIS DRAWING IS THE PROPERTY OF VESUVIUS AND CONTAINS CONFIDENTIAL AND PROPRIETARY INFORMATION. THE EQUIPMENT PURCHASER MAY USE THIS DRAWING FOR THE SOLE PURPOSE OF MAINTAINING THIS EQUIPMENT AS PURCHASED FROM VESUVIUS. ANY COPYING, USE FOR ANY PURPOSE APART FROM MAINTENANCE, OR DISCLOSURE OF THIS DRAWING, OR THE INFORMATION THEREIN, WITHOUT THE WRITTEN PERMISSION OF VESUVIUS IS STRICTLY FORBIDDEN.			
FINISH			
6.3			
PROJECT			
DP230017			
MODEL			
PDM300			
DRAWING #			
9F19103			
REV			
0			